

# 114A



Cromwell Road SW7

Up to 13,954 Sq Ft of office space  
in the heart of Kensington



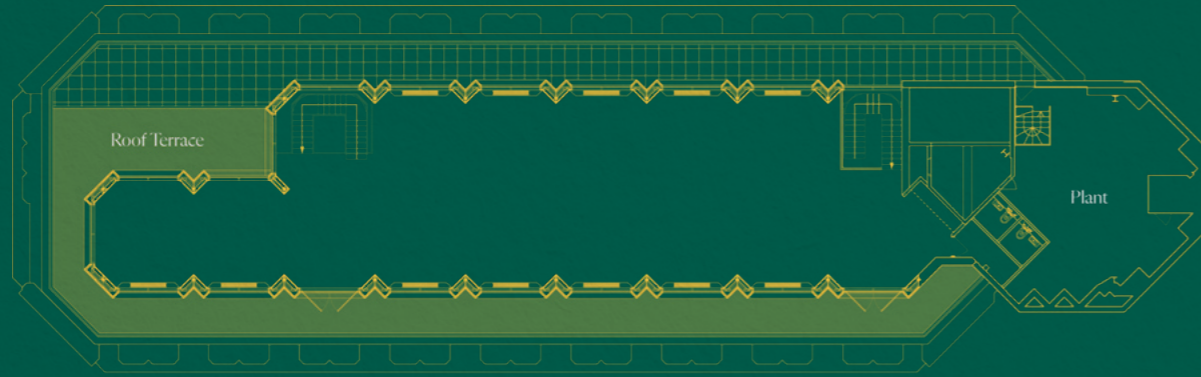
# Views so good you won't want to leave the office...



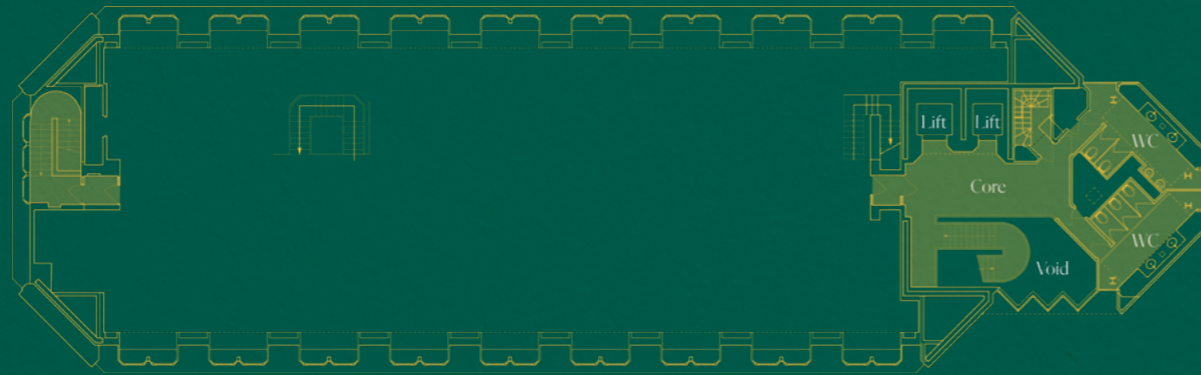


# High specification exquisitely constructed

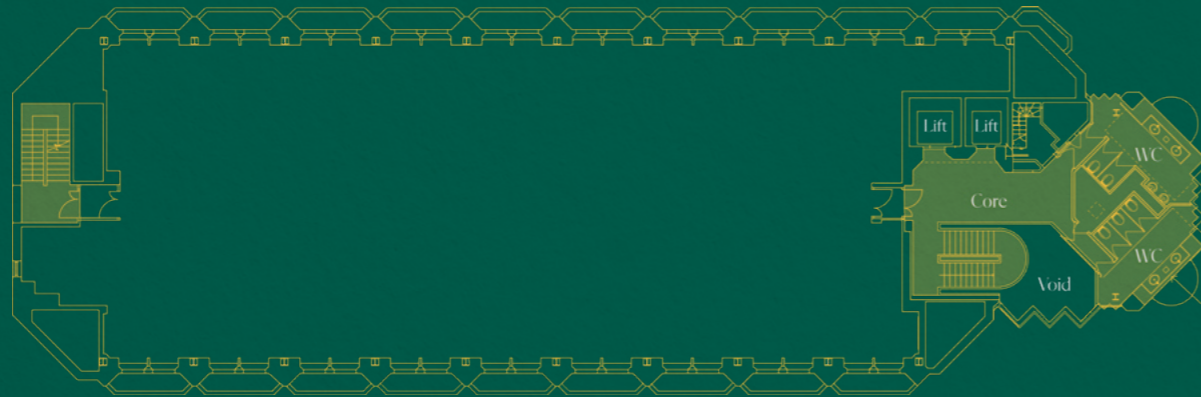
Penthouse



Fifth Floor



Fourth Floor




  
Bike storage and  
shower facilities

  
Brand new  
passenger lifts

  
Views across  
Central London

  
Car  
parking

  
Brand new  
exposed A/C

  
Wrap around  
terrace

  
Interconnecting  
staircases

  
EPC  
rating

The available accommodation includes the refurbished fourth floor and a brand new extended duplex fifth and penthouse floors of this modern building.

The floors are column free and benefit from excellent natural light and refurbished entrance/arrival and common parts.

Penthouse	2,914 Sq Ft	270 Sq M
Fifth Floor	5,250 Sq Ft	487 Sq M
Fourth Floor	5,790 Sq Ft	537 Sq M
<b>Total</b>	<b>13,954 SQ FT</b>	<b>1,294SQ M</b>

Floor areas subject to measurement on completion of works.

4  
5



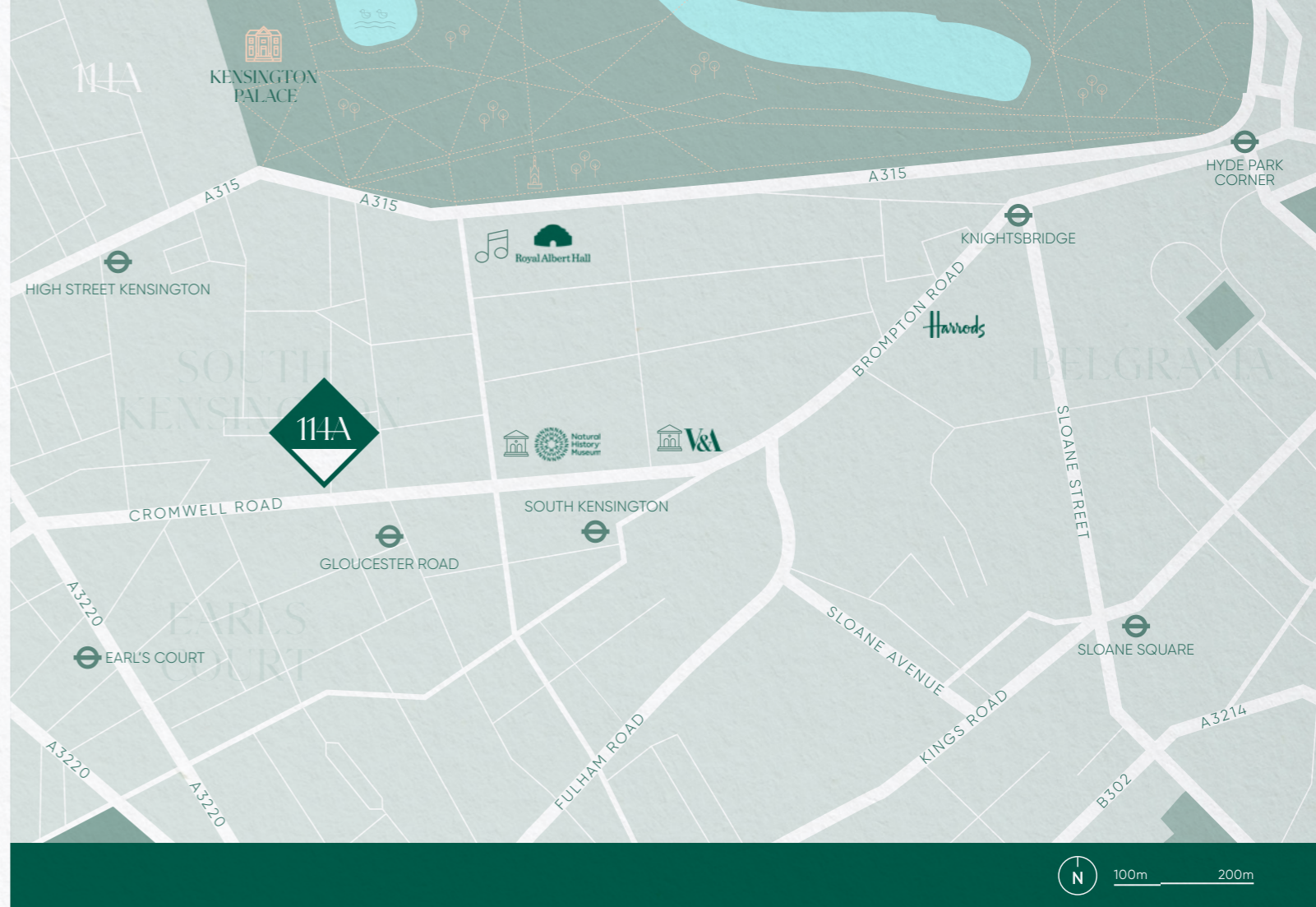


114A Cromwell Road

# In the heart of Kensington

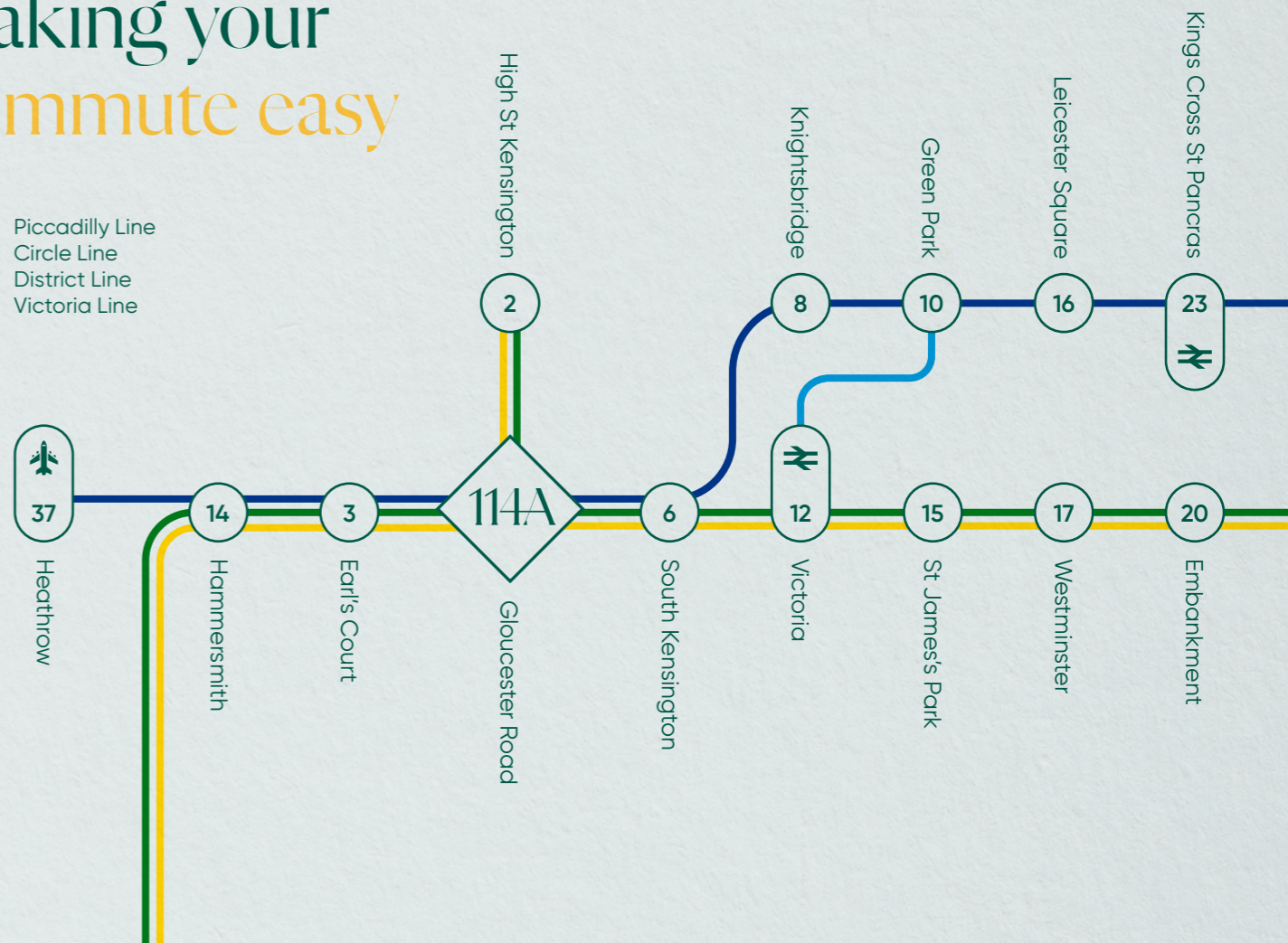
114A is located in the heart of Kensington in a prominent position on the north side Cromwell Road between Grenville Place and Ashburn Gardens. Offering easy access to Kensington and Chelsea, providing a wealth of amenities.

Transport links are excellent with Gloucester Road (Piccadilly, District and Circle lines) tube station located moments away. High Street Kensington (District and Circle lines) and South Kensington (Piccadilly, District and Circle lines) stations are close proximity.



## Making your commute easy

- Piccadilly Line
- Circle Line
- District Line
- Victoria Line







**Sean Cunningham**  
07827 985 858  
[scunningham@edwardcharles.co.uk](mailto:scunningham@edwardcharles.co.uk)

**Jamie Shuttle**  
07788 414 332  
[jshuttle@edwardcharles.co.uk](mailto:jshuttle@edwardcharles.co.uk)